

Primary Care Practitioners
(Family Practice)

Indigenous Cancer Care

Supportive Care

(Counselling, Psychiatry, Nutrition, Speech Language Pathology, Physiotherapy, Pain & Symptom Management/Palliative Care)

This figure represents a general pathway of care that most people with cancer will experience. It shows

- The major phases of a cancer journey
- How a person might progress through each phase
- Key supportive services that are available throughout each person's cancer journey

Please visit the [Clinical Pathways Web](#) page for

- Tumour Group Clinical Pathways
- Patient Companion Guide
- Methodology Reports

Target Population

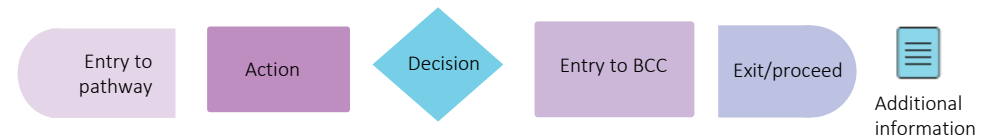
The target population for this pathway include health care providers such as primary care physicians, oncologists, specialists, nurses, and other members of a health care team including allied health providers. Healthcare administrators across BC Cancer and the health authorities may also benefit from this resource for systems and operational planning.

Pathway Disclaimer

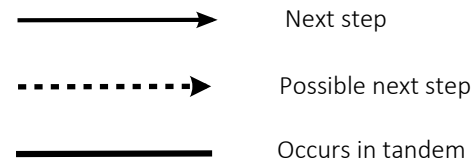
This pathway is an informational resource, intended to provide a high-level overview of the treatment journey a patient in British Columbia may receive. This pathway is not a substitute for medical advice and clinical judgment is still required as not all care trajectories will follow the proposed steps outlined in the pathway. This resource may not reflect all available evidence as research continues to evolve rapidly and BC Cancer is not responsible for any incomplete information. Furthermore, BC Cancer and those involved in developing this pathway are not liable for any incidental or consequential outcomes related to the information in this pathway. Anyone using the information provided in this pathway does so at their own risk.

Pathway Map Legend

Shape Guide



Line Guide



Pathway Map Considerations

This pathway is intended as a high-level resource and therefore does not include specific recommendations on specific systemic therapy protocols or radiation therapy doses. Instead, additional information can be sought via the inserted hyperlinks to resources that may aid a clinician in their treatment planning. The level of detail for each pathway was guided by the tumor group lead and intentionally kept high-level and represents the overall ideal pathway of care for a patient in general. Each patient will have individual needs and each cancer centre may have variation in the way care is delivered, but overall the intent was to represent the pathway that the majority of patients will follow.

General Resources

Indigenous Patient Navigator Referral Form (16): <http://www.phsa.ca/aboriginal-health-site/Documents/IPN%20Fillable%20Referral%20Form.pdf>

Supportive Care (9): <http://www.bccancer.bc.ca/our-services/services/supportive-care>

Compassionate Access Program (CAP) (37) : <https://cap.phsa.ca/>

Sarcoma Chemotherapy Protocols (6) : <http://www.bccancer.bc.ca/health-professionals/clinical-resources/chemotherapy-protocols/sarcoma>

Manufacturer Patient Assistance Programs (7) : <http://www.bccancer.bc.ca/systemic-therapy-site/Documents/Policy%20and%20Forms/Patient%20assistance%20programs.pdf>

BC Cancer Research Clinical Trials (14): <https://www.bccrc.ca/dept/cid/clinical-trials>

Smoking Cessation Program (38) : <http://www.bccancer.bc.ca/health-professionals/clinical-resources/smoking-cessation-program>

Alcohol Reduction (39) : <http://www.bccancer.bc.ca/prevent/alcohol/reduce-your-risk>

MDC Referral Form (4): <http://www.bccancer.bc.ca/books/Documents/Clinical%20Care%20Pathways/Patient%20Conference%20Order.pdf>

Pharmacy Contact Info (40): <http://www.bccancer.bc.ca/health-professionals/clinical-resources/pharmacy#Contact--info>

Abbreviations

GPO: General Practitioner in Oncology

MDC: Multidisciplinary Conference/Discussion

MRP: Most Responsible Provider

PCP: Primary Care Provider

PFC: Patient & Family Counseling

PSMPC: Pain & Symptom Management & Palliative Care

RT: Radiation Therapy

ST: Systemic Therapy

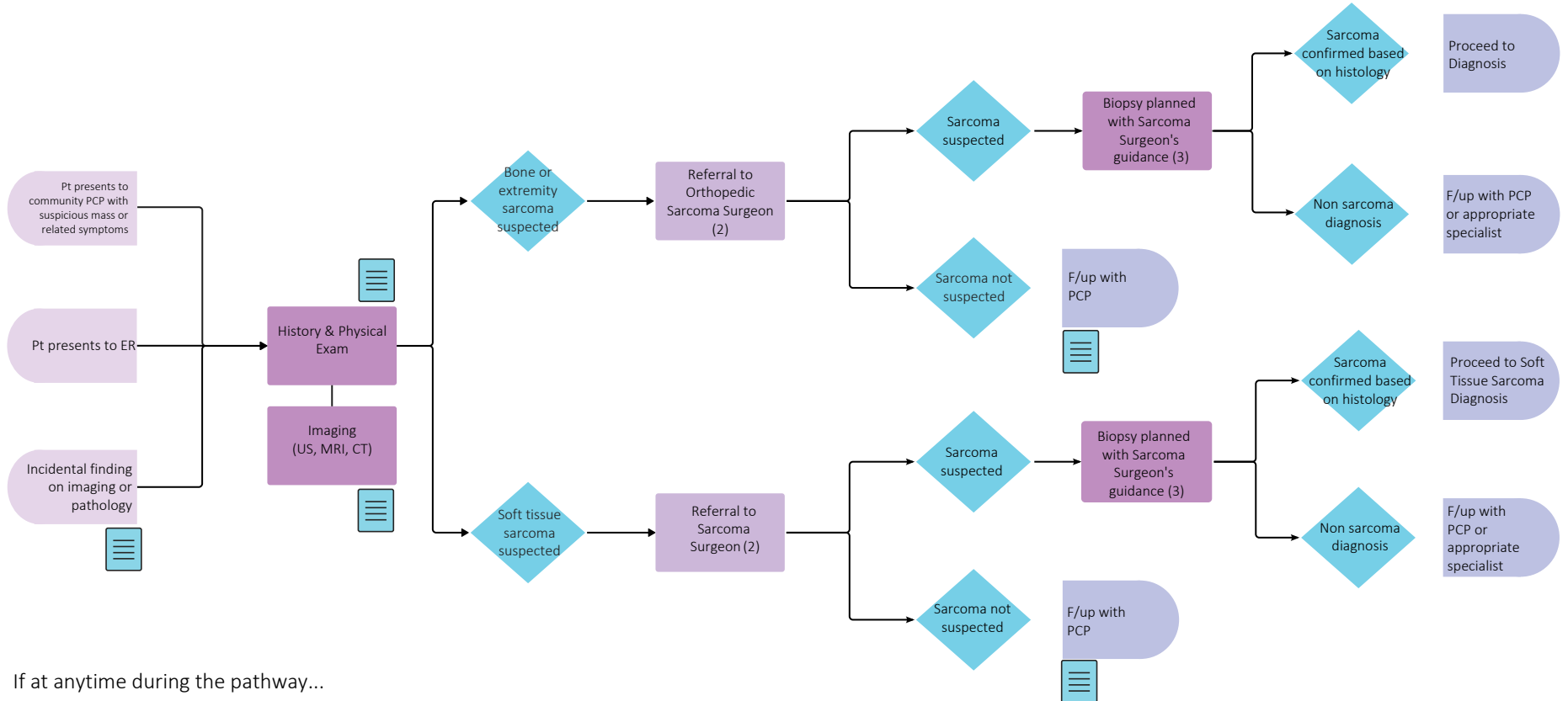
STS: Soft Tissue Sarcoma

Additional Information

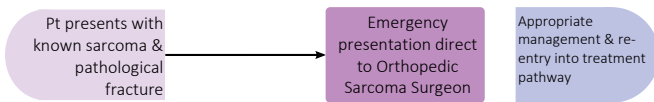
To learn more about how the Clinical Care Pathways are developed, visit the [Methodology Report](#).

Other Tumour Group Clinical Care Pathways can be found on the [BC Cancer Website](#).

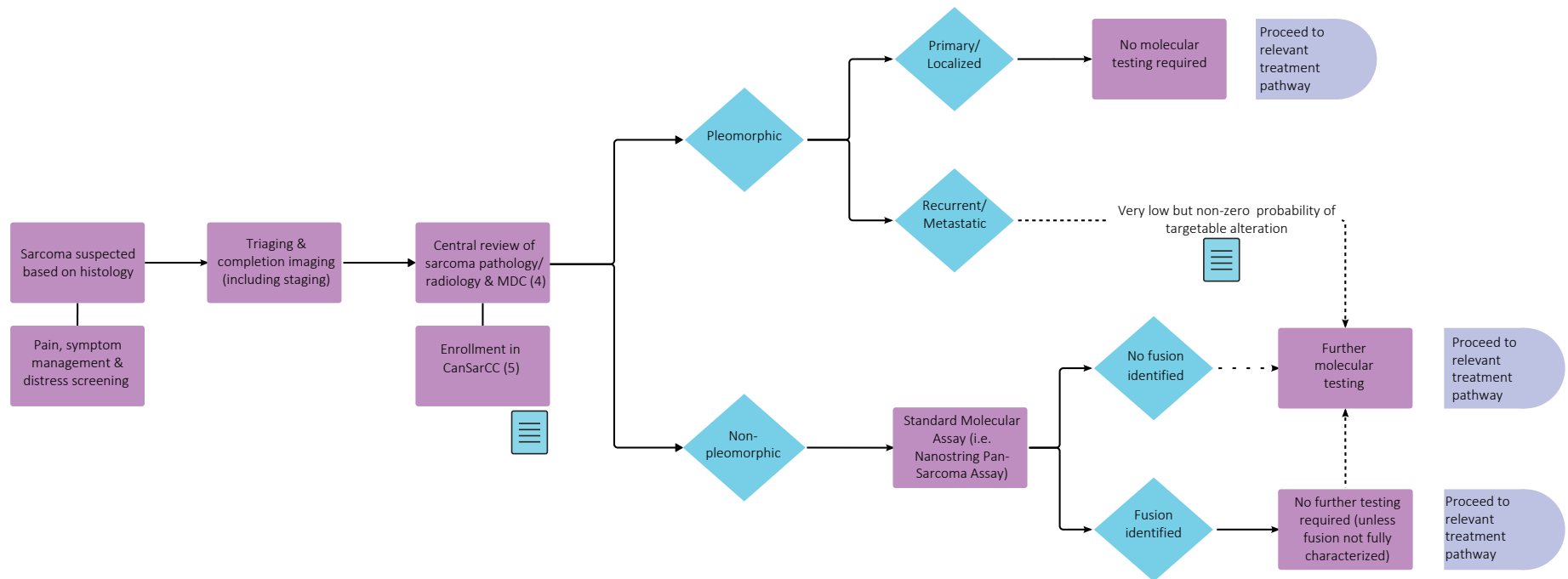
Pre-Diagnosis



If at anytime during the pathway...



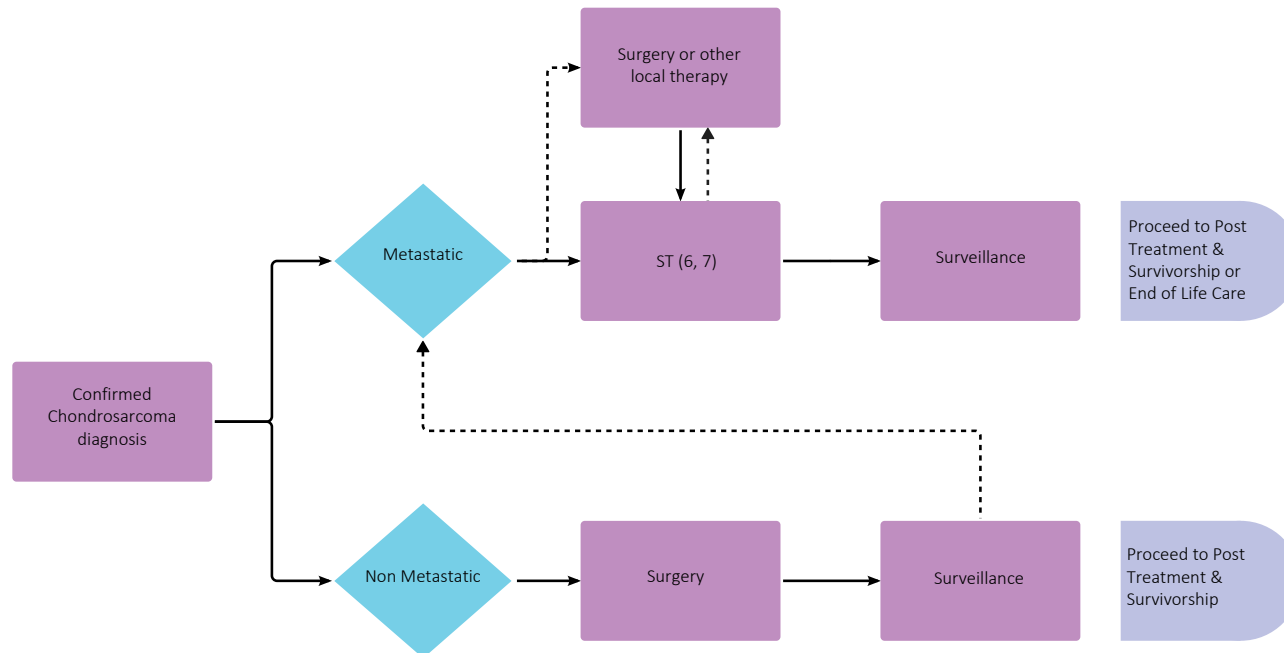
Diagnosis



Throughout treatment, consider...

Regular symptom & performance status assessment (8); Supportive care (9, 10); Sexual health (11, 12, 13); Co-morbidity management & medication review; Risk factor mitigation; Clinical trials (5, 14) (where applicable); Goals of care (15); Cultural needs (16); Involvement of PCP

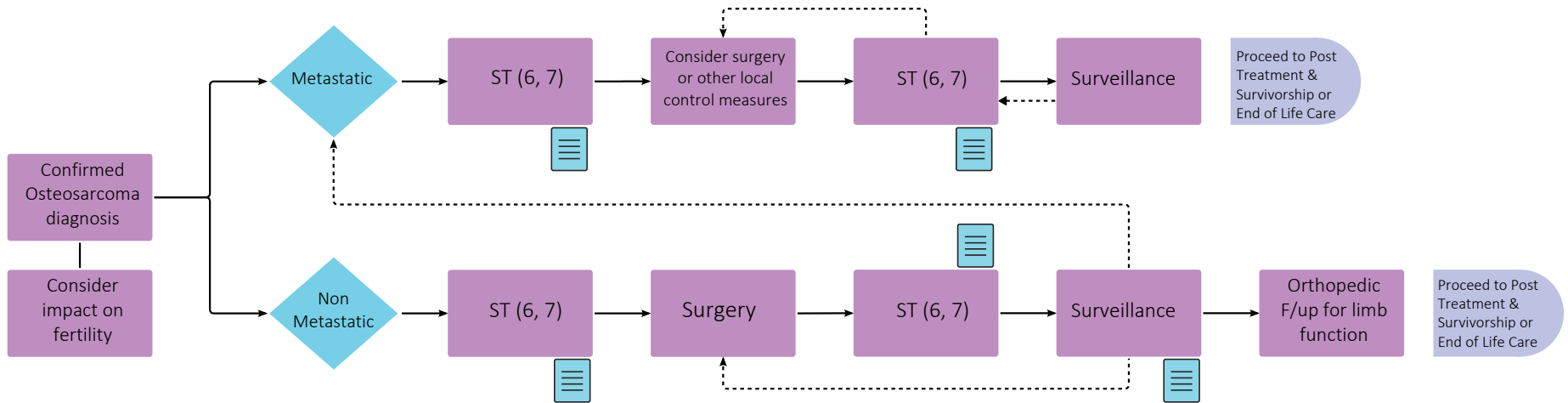
Treatment - Chondrosarcoma



Throughout treatment, consider...

Regular symptom & performance status assessment (8); Supportive care (9, 10); Sexual health (11, 12, 13); Co-morbidity management & medication review; Risk factor mitigation; Clinical trials (5, 14) (where applicable); Goals of care (15); Cultural needs (16); Involvement of PCP

Treatment - Osteosarcoma

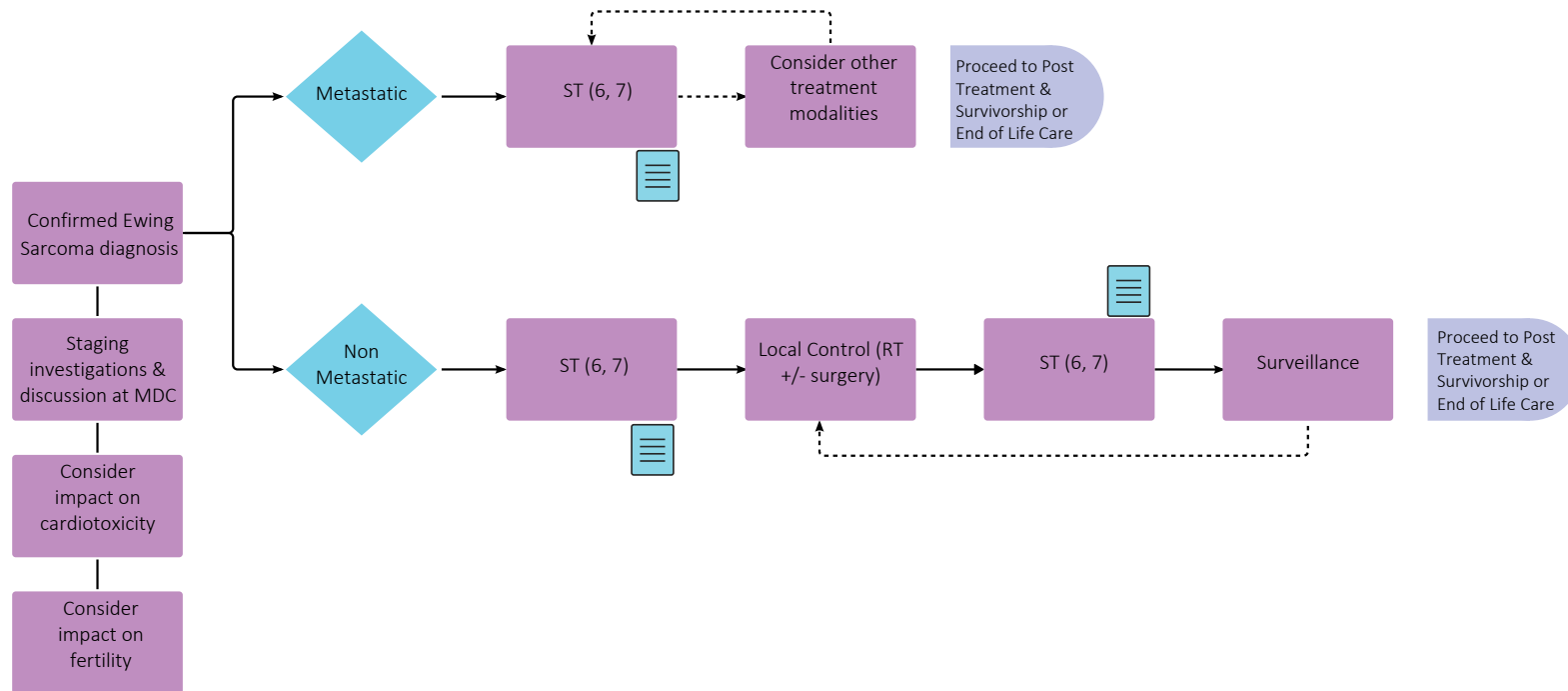


Throughout treatment, consider...



Regular symptom & performance status assessment (8); Supportive care (9, 10); Sexual health (11, 12, 13); Co-morbidity management & medication review; Risk factor mitigation; Clinical trials (5, 14) (where applicable); Goals of care (15); Cultural needs (16); Involvement of PCP

Treatment - Ewings family of Tumours

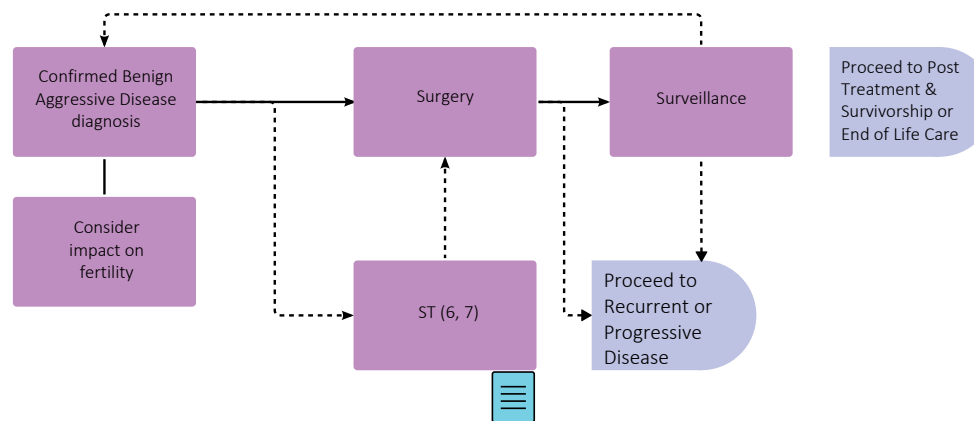


Throughout treatment, consider...



Regular symptom & performance status assessment (8); Supportive care (9, 10); Sexual health (11, 12, 13); Co-morbidity management & medication review; Risk factor mitigation; Clinical trials (5, 14) (where applicable); Goals of care (15); Cultural needs (16); Involvement of PCP

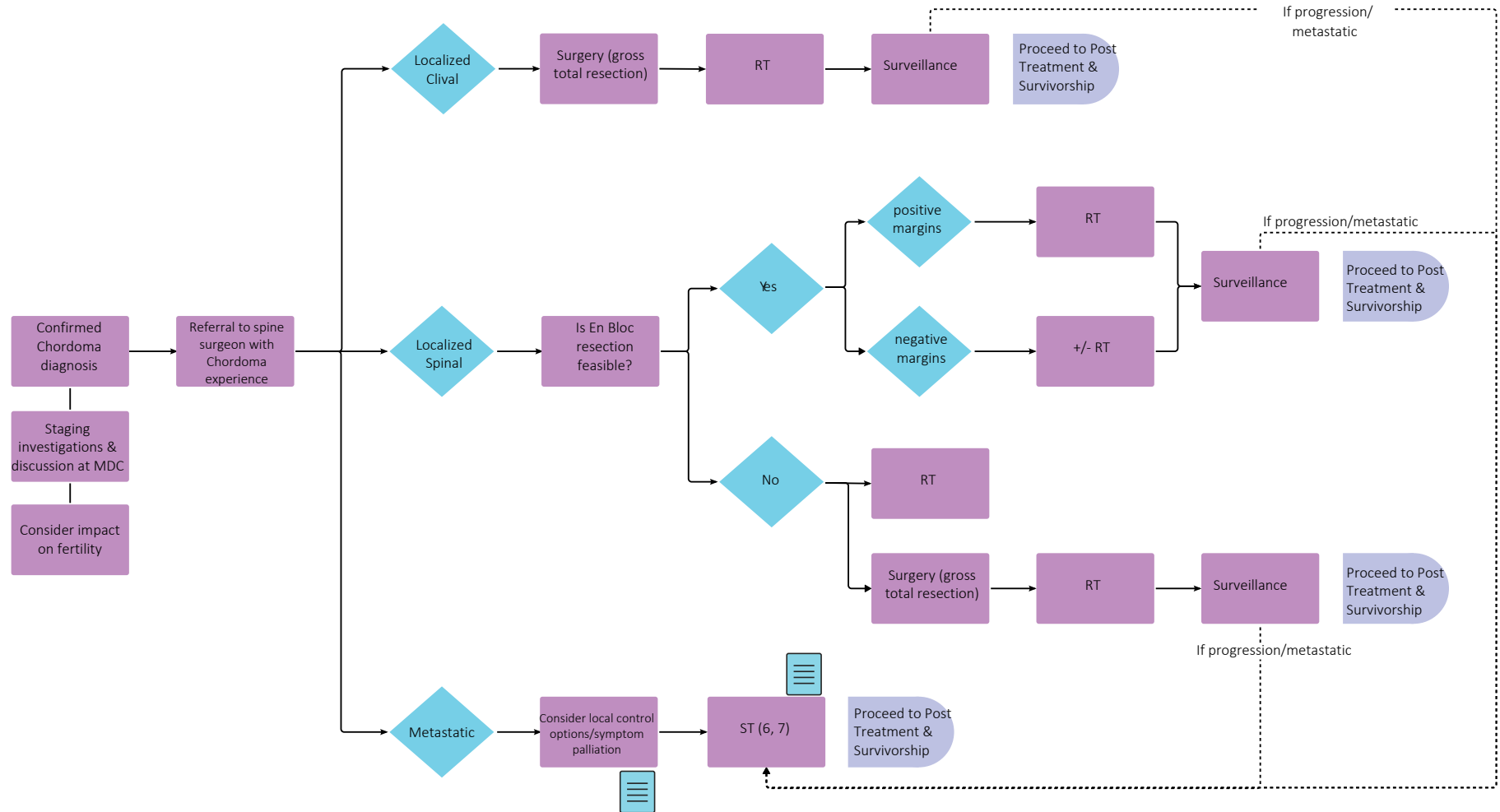
Treatment - Benign Aggressive Disease (GCT, TGCT)



Throughout treatment, consider...

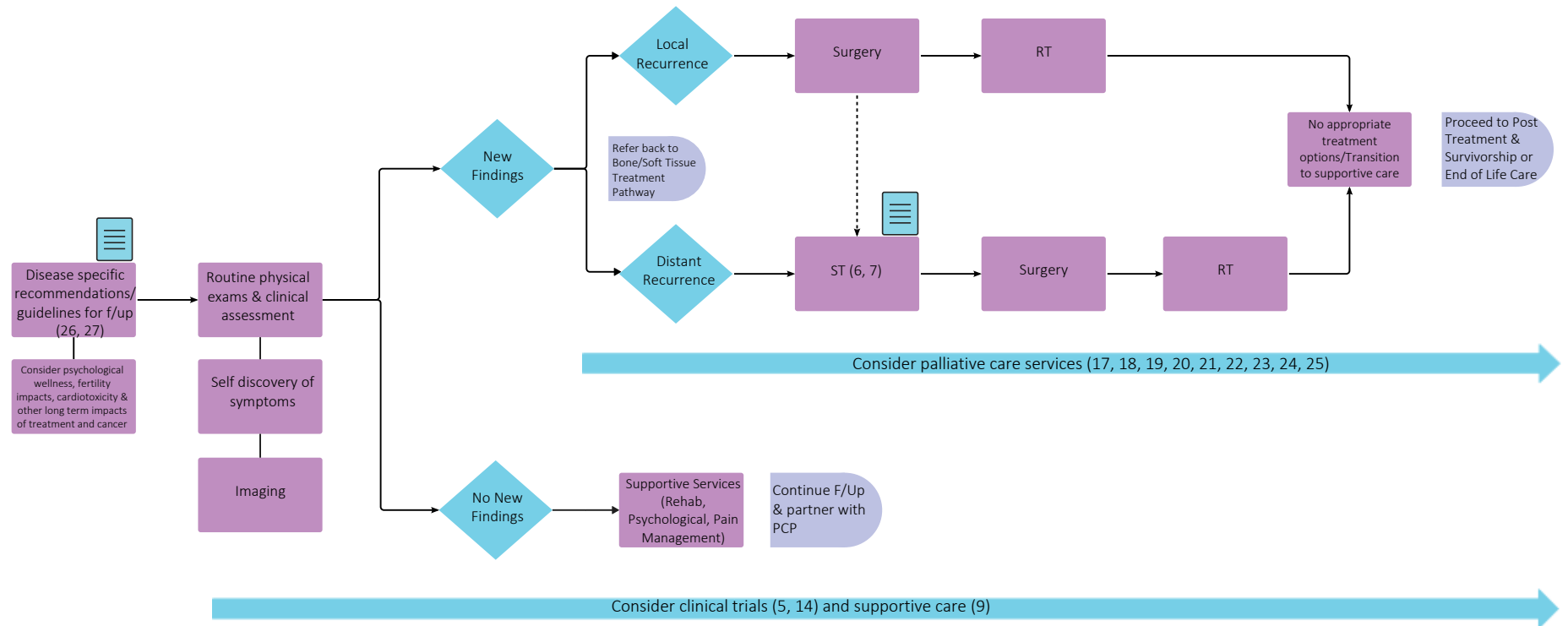
Regular symptom & performance status assessment (8); Supportive care (9, 10); Sexual health (11, 12, 13); Co-morbidity management & medication review; Risk factor mitigation; Clinical trials (5, 14) (where applicable); Goals of care (15); Cultural needs (16); Involvement of PCP

Treatment - Chordoma



Consider palliative & supportive care needs (9, 17, 18, 19, 20, 21, 22, 23, 24, 25)

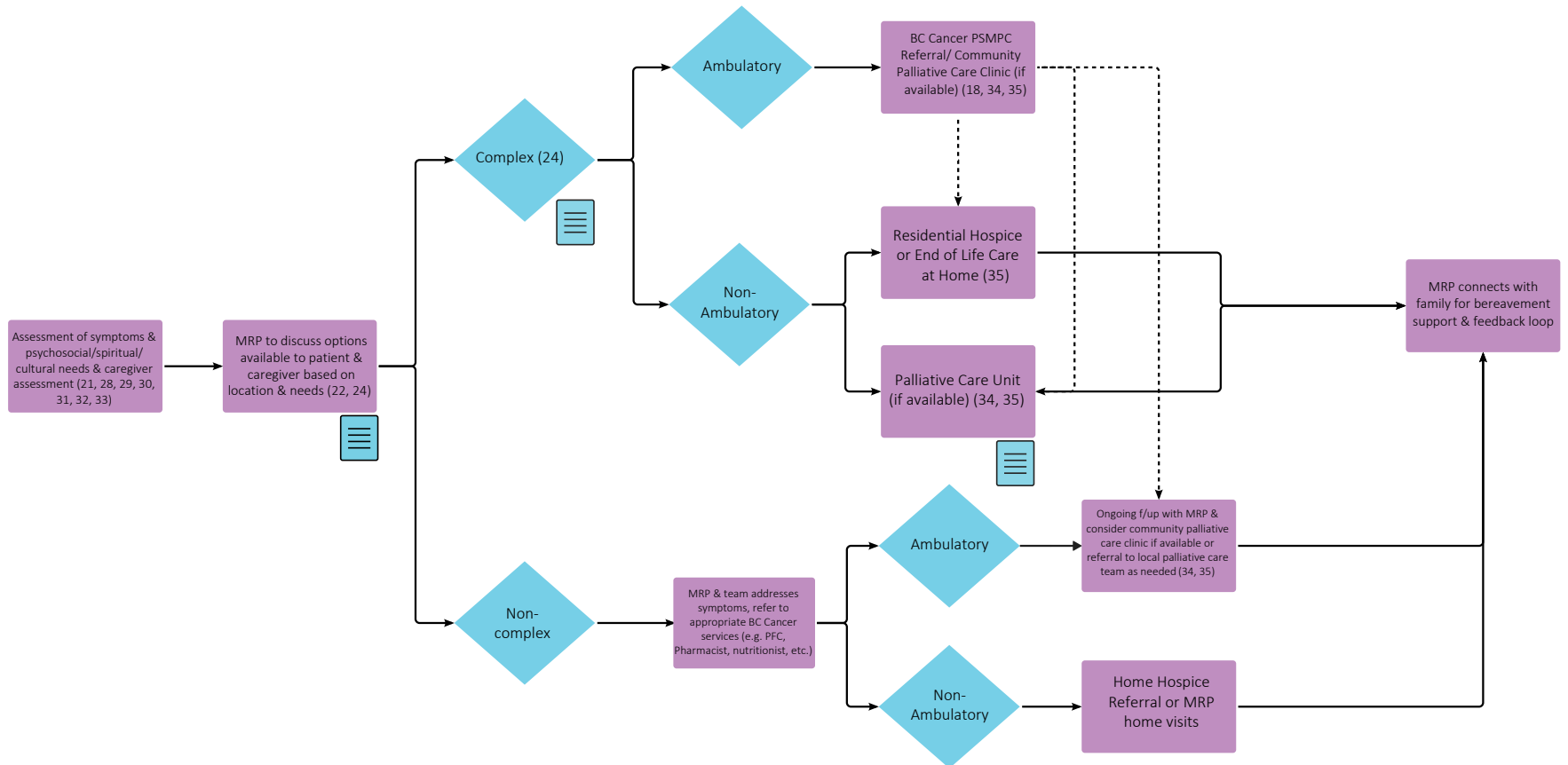
Post- Treatment & Survivorship Recurrent or Progressive Disease



Throughout treatment, consider...

Regular symptom & performance status assessment (8); Sexual health (11, 12, 13); Co-morbidity management & medication review; Risk factor mitigation; Goals of care (15); Cultural needs (16); Involvement of PCP

End of Life Care



Goals of Care Discussion & Consideration of Cultural Needs (15, 16, 20, 22, 23, 24, 25, 36)

Subject Matter Expert Working Group & COIs

Christine Simmons, Project Lead, Medical Oncologist
Pfizer, Merck, Roche, Novartis, Medison, Gilead, Amgen, Lilly, BI

Raphael Charest-Morin, Spine Surgeon
Cerapedics, NASS translational award, AOSpine Innovation and discovery Award, New frontiers in Research-Exploration Grant, VCH Research Institute Investigation Award

Paul Clarkson, Orthopedic Oncologist
COI pending

Cathy Clelland, Family Physician
No disclosures

Caroline Holloway, Radiation Oncologist
BI

Paul Mallinson, Radiologist
Canadian Association of Radiologists CT Accreditation Program

Tony Ng, Pathologist
Bayer, Roche

Sita Ollek, Surgical Oncologist
No disclosures

Rod Rassekh, Pediatric Oncologist
COI pending

Alannah Smrke, Medical Oncologist
Bayer, GSK, Roche, BI

Pathway Program Team

Tammy Currie, Executive Director, Provincial Programs
Amilya Ladak, Policy Analyst, Tumour Groups
Shaifa Nanji, Manager, Tumour Groups
Sonia Panesar, Project Coordinator, Tumour Groups
Christine Simmons, Tumour Group Council Chair
Elaine Wai, Senior Executive Director, Medical Affairs and Quality
Sarah Weller, Director, Provincial Programs

Other Stakeholders

Family Practice & GPO
Indigenous Cancer Control
Nursing Community of Practice (NCoP)
Patient and Family Experience team
Provincial Pharmacy
Radiation Therapists
Surgical Oncology Network

Appendix

1. <http://www.bccancer.bc.ca/health-info/clinical-care-pathways>
2. <http://www.bccancer.bc.ca/health-professionals-site/Documents/Patient-Referral-Form.pdf>
3. <http://www.bccancer.bc.ca/books/Documents/Clinical%20Care%20Pathways/RP%20Sarcoma%20biopsy%20guidelines.pdf>
4. <http://www.bccancer.bc.ca/books/Documents/Clinical%20Care%20Pathways/Patient%20Conference%20Order.pdf>
5. <https://www.cansarcc.ca/>
6. <http://www.bccancer.bc.ca/health-professionals/clinical-resources/chemotherapy-protocols/sarcoma>
7. <http://www.bccancer.bc.ca/systemic-therapy-site/Documents/Policy%20and%20Forms/Patient%20assistance%20programs.pdf>
8. <https://www.uptodate.com/contents/image?imageKey=HEME%2F72901>
9. <http://www.bccancer.bc.ca/our-services/services/supportive-care>
10. <http://www.bccancer.bc.ca/our-services/services/support-programs>
11. <https://www.olivefertility.com/referring-physicians>
12. <https://www.pacificfertility.ca/physician-resources>
13. <http://www.bccancer.bc.ca/health-info/coping-with-cancer/managing-symptoms-side-effects/sexual-health>
14. <https://www.bccrc.ca/dept/cid/clinical-trials>
15. <http://www.bccancer.bc.ca/new-patients-site/Documents/ACP-goals-of-care-orders.pdf>
16. <http://www.phsa.ca/aboriginal-health-site/Documents/IPN%20Fillable%20Referral%20Form.pdf>
17. <http://www.bccancer.bc.ca/our-services/services/supportive-care/pain-symptom-management>
18. <http://www.bccancer.bc.ca/managing-symptoms-site/Documents/PSMPC-Referral-Form-for-All-BC-Cancer-Centres.pdf>
19. <http://www.bccancer.bc.ca/new-patients-site/Documents/Goals%20of%20Care%20Orders%20Form%20June%202018%20Final.pdf>
20. <https://www2.gov.bc.ca/assets/gov/people/seniors/health-safety/pdf/myvoice-advancecareplanningguide.pdf>
21. <https://www2.gov.bc.ca/gov/content/health/practitioner-professional-resources/pharmacare/prescribers/plan-p-bc-palliative-care-benefits-program>
22. <http://www.bccancer.bc.ca/new-patients-site/Documents/SeriousIllnessConversationGuideCard.pdf>
23. <http://www.bccancer.bc.ca/managing-symptoms-site/Documents/When-Life-Nearing-its-End.pdf>
24. <http://www.phsa.ca/health-info/medical-assistance-in-dying>
25. <http://www.bccancer.bc.ca/new-patients-site/Documents/ACP-tips-for-oncology-professionals.pdf>
26. <http://survivorshipguidelines.org/>
27. <https://clinicalsarcomaresearch.biomedcentral.com/articles/10.1186/s13569-016-0060-4#Sec71>
28. <http://www.bccancer.bc.ca/books/Documents/Clinical%20Care%20Pathways/Revised%20PSMPC%20Questionnaire%20Pink%20Form%202020-21.pdf>
29. <http://www.bccancer.bc.ca/our-services/centres-clinics/bc-cancer-vancouver/epicc>
30. https://www2.gov.bc.ca/assets/gov/health/practitioner-pro/bc-guidelines/palliative1_appendix_a.pdf
31. <https://bc-cpc.ca/wp-content/uploads/2018/09/SMGs-interactive-final-Nov-30-compressed.pdf>
32. <https://www2.gov.bc.ca/gov/content/health/practitioner-professional-resources/bc-guidelines/palliative-care>
33. <http://www.bccancer.bc.ca/our-services/services/indigenous-cancer-control>
34. <http://www.bccancer.bc.ca/our-services/services/supportive-care/pain-symptom-management#What--we--do>
35. https://vancouver.pathwaysbc.ca/service_categories/24
36. <https://www2.gov.bc.ca/gov/content/family-social-supports/seniors/health-safety/advance-care-planning>
37. <https://cap.phsa.ca/>
38. <http://www.bccancer.bc.ca/health-professionals/clinical-resources/smoking-cessation-program>
39. <http://www.bccancer.bc.ca/prevent/alcohol/reduce-your-risk>
40. <http://www.bccancer.bc.ca/health-professionals/clinical-resources/pharmacy#Contact--info>