

**Primary Care Practitioners**  
(Family Practice)

**Indigenous Cancer Care**

**Supportive Care**  
(Counselling, Psychiatry, Nutrition, Speech Language Pathology, Physiotherapy, Pain & Symptom Management/Palliative Care)

This figure represents a general pathway of care that most people with cancer will experience. It shows

- The major phases of a cancer journey
- How a person might progress through each phase
- Key supportive services that are available throughout each person's cancer journey

Please visit the [Clinical Care Pathways](#) Web page for

- Tumour Specific Group Clinical Pathways
- Patient Companion Guide
- Methodology Reports

## Target Population

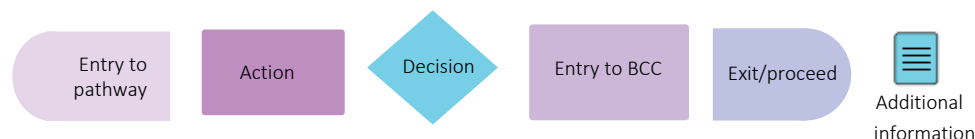
The target population for this pathway include health care providers such as primary care physicians, oncologists, specialists, nurses, and other members of a health care team including allied health providers. Healthcare administrators across BC Cancer and the health authorities may also benefit from this resource for systems and operational planning.

## Pathway Disclaimer

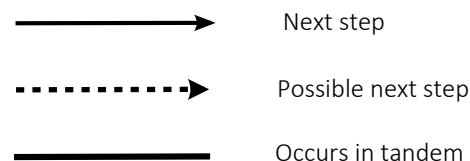
This pathway is an informational resource, intended to provide a high-level overview of the treatment journey a patient in British Columbia may receive. This pathway is not a substitute for medical advice and clinical judgment is still required as not all care trajectories will follow the proposed steps outlined in the pathway. This resource may not reflect all available evidence as research continues to evolve rapidly and BC Cancer is not responsible for any incomplete information. Furthermore, BC Cancer and those involved in developing this pathway are not liable for any incidental or consequential outcomes related to the information in this pathway. Anyone using the information provided in this pathway does so at their own risk.

## Pathway Map Legend

### Shape Guide



### Line Guide



## Pathway Map Considerations

This pathway is intended as a high-level resource and therefore does not include specific recommendations on specific systemic therapy protocols or radiation therapy doses. Instead, additional information can be sought via the inserted hyperlinks to resources that may aid a clinician in their treatment planning. The level of detail for each pathway was guided by the tumor group lead and intentionally kept high-level and represents the overall ideal pathway of care for a patient in general. Each patient will have individual needs and each cancer centre may have variation in the way care is delivered, but overall the intent was to represent the pathway that the majority of patients will follow.

## General Resources

**Indigenous Patient Navigator Referral Form** (12): <http://www.phsa.ca/aboriginal-health-site/Documents/IPN%20Fillable%20Referral%20Form.pdf>

**Supportive Care** (5): <http://www.bccancer.bc.ca/our-services/services/supportive-care>

**Compassionate Access Program (CAP)** (34): <https://cap.phsa.ca/>

**Head & Neck Chemotherapy Protocols** (15): <http://www.bccancer.bc.ca/health-professionals/clinical-resources/chemotherapy-protocols/head-neck>

**Manufacturer Patient Assistance Programs** (16): <http://www.bccancer.bc.ca/systemic-therapy-site/Documents/Policy%20and%20Forms/Patient%20assistance%20programs.pdf>

**BC Cancer Research Clinical Trials** (10): <https://www.bccrc.ca/dept/cid/clinical-trials>

**Smoking Cessation Program** (2): <http://www.bccancer.bc.ca/health-professionals/clinical-resources/smoking-cessation-program>

**Alcohol Reduction** (35): <http://www.bccancer.bc.ca/prevent/alcohol/reduce-your-risk>

**MDC Referral Form** (14): <http://www.bccancer.bc.ca/books/Documents/Clinical%20Care%20Pathways/Patient%20Conference%20Order.pdf>

**Pharmacy Contact Info** (39): <http://www.bccancer.bc.ca/health-professionals/clinical-resources/pharmacy#Contact--info>

---

## Abbreviations

**GPO:** General Practitioner in Oncology

**HCP:** Hereditary Cancer Program

**MDC:** Multidisciplinary Conference/Discussion

**MRP:** Most Responsible Provider

**PCP:** Primary Care Provider

**PFC:** Patient & Family Counseling

**PSMPC:** Pain & Symptom Management & Palliative Care

**RT:** Radiation Therapy

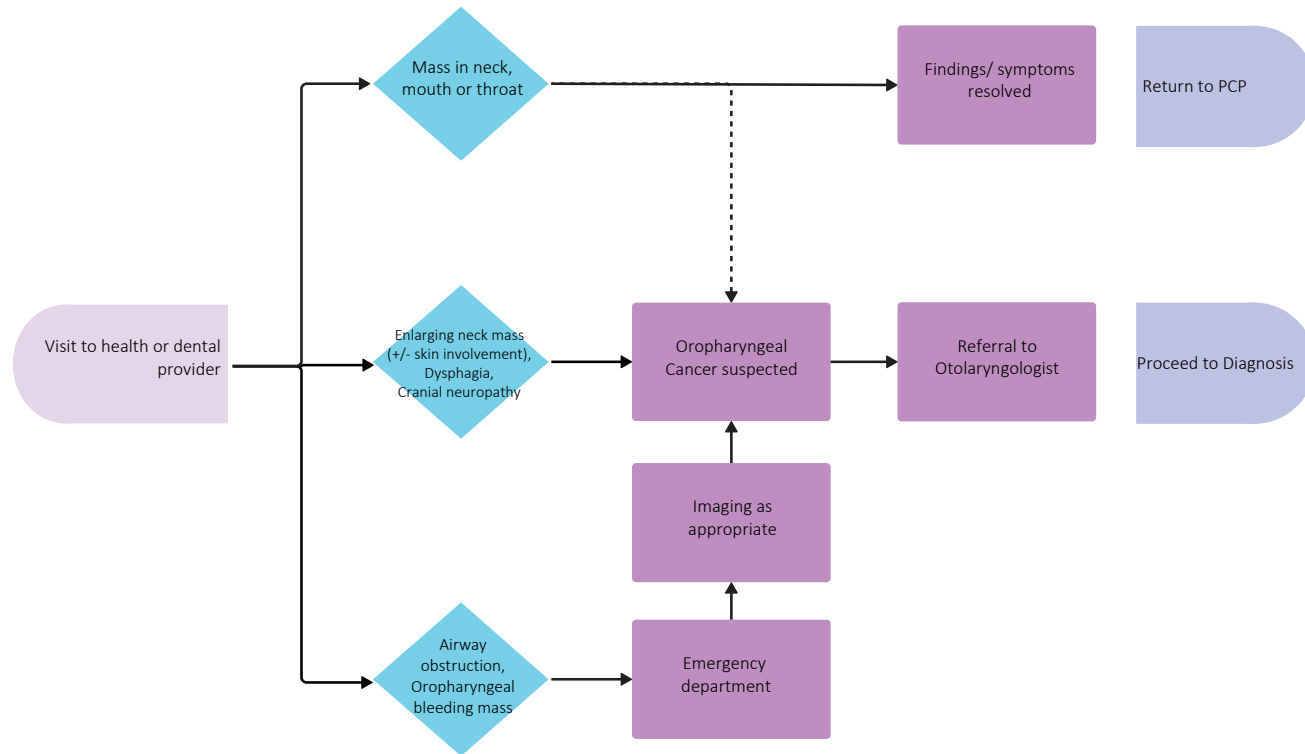
**ST:** Systemic Therapy

## Additional Information

To learn more about how the Clinical Care Pathways are developed, visit the [Methodology Report](#).

Other Tumour Group Clinical Care Pathways can be found on the [BC Cancer Website](#).

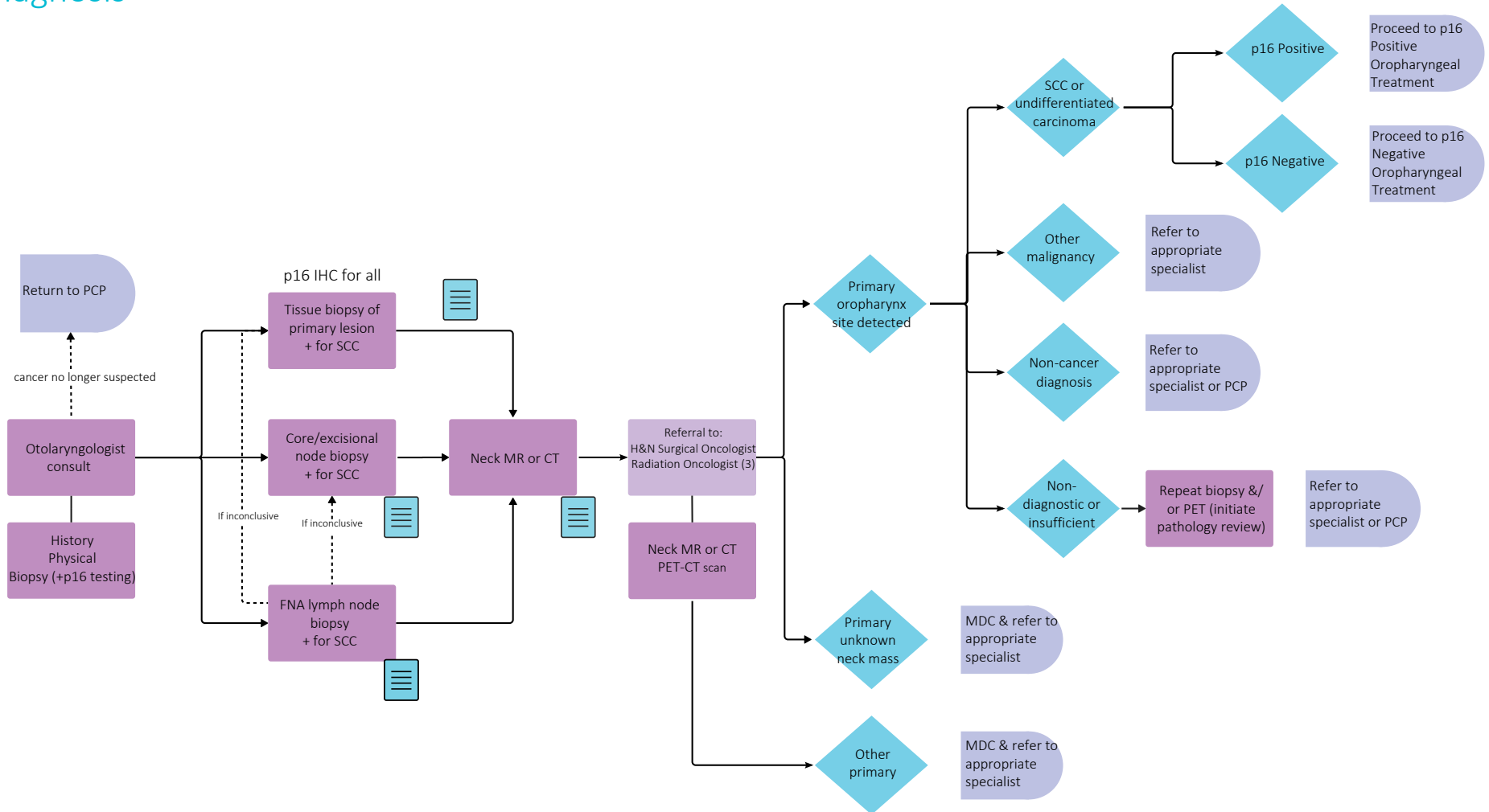
## Pre-Diagnosis



Other referrals may include:

Consider smoking cessation counselling (as appropriate) (2)

## Diagnosis



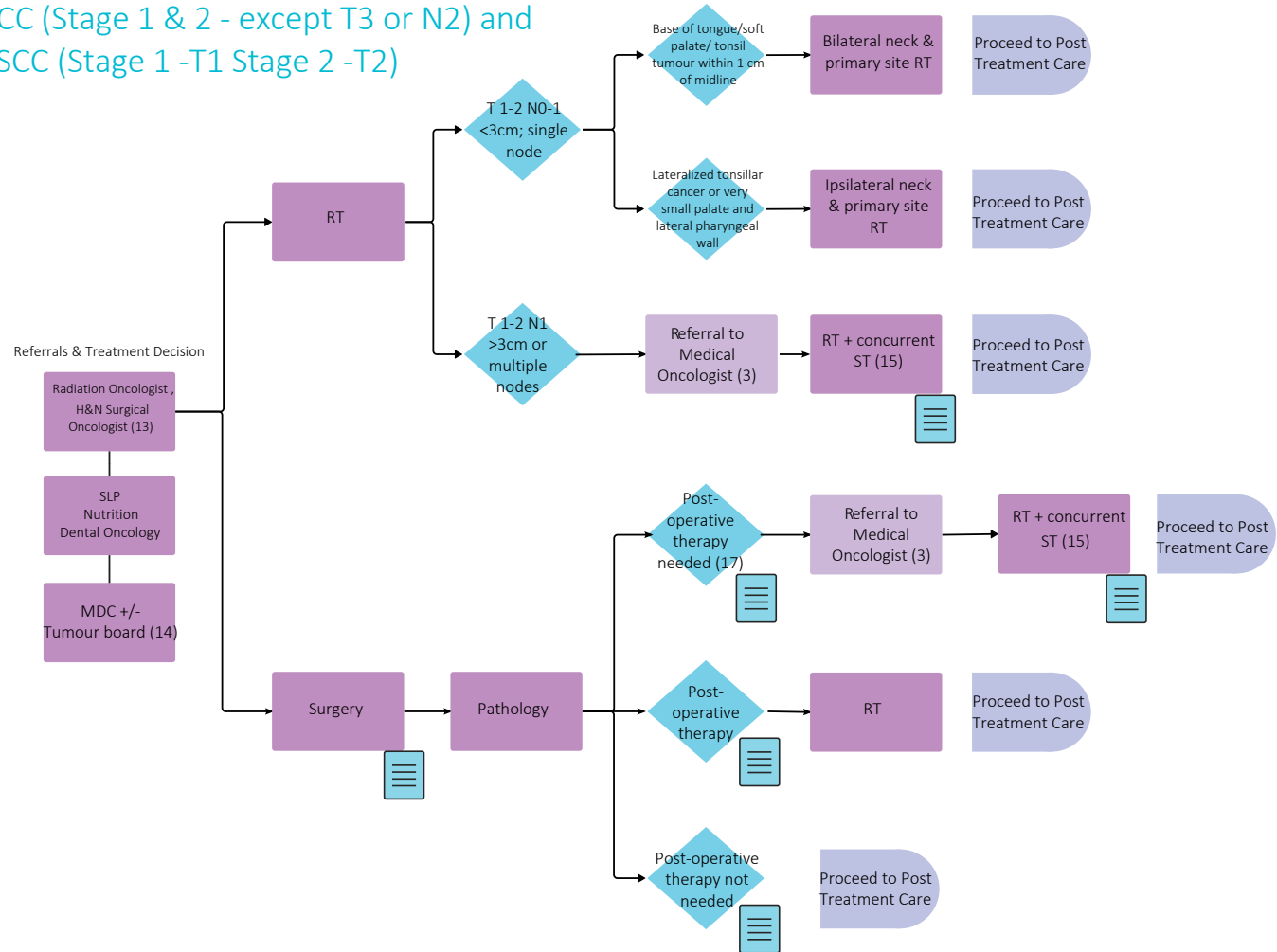
Throughout treatment, consider...

Regular symptom & performance status assessment (4); Supportive care (5, 6); Sexual health (7, 8, 9); Co-morbidity management & medication review; Risk factor mitigation; Clinical trials (where applicable) (10); Goals of care (11); Cultural needs (12); Involvement of PCP

# Head & Neck Tumour Group - Oropharyngeal Pathway

## Treatment

p16 Positive Oropharyngeal SCC (Stage 1 & 2 - except T3 or N2) and  
p16 Negative Oropharyngeal SCC (Stage 1 -T1 Stage 2 -T2)



Other referrals may include:

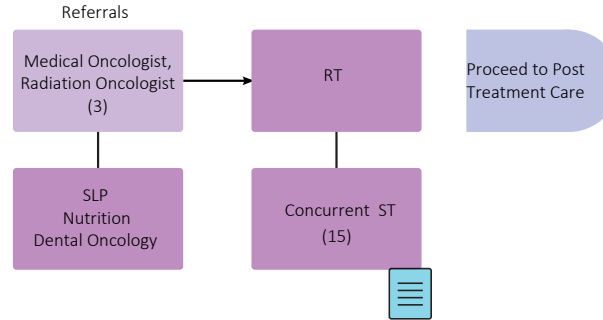
Nursing	Social Work
Physiotherapy	Audiology
PSMPC & PFC (5, 6)	Smoking Cessation Program (2)

Throughout treatment, consider...

Regular symptom & performance status assessment (4); Supportive care (5, 6); Sexual health (7, 8, 9); Co-morbidity management & medication review; Risk factor mitigation; Clinical trials (where applicable) (10); Goals of care (11); Cultural needs (12); Involvement of PCP

## Treatment

p16 Positive Oropharyngeal SCC (Stage 2 T3 or N2, or Stage 3) and  
p16 Negative Oropharyngeal SCC (Stage 3, 4A-B)



Other referrals may include:

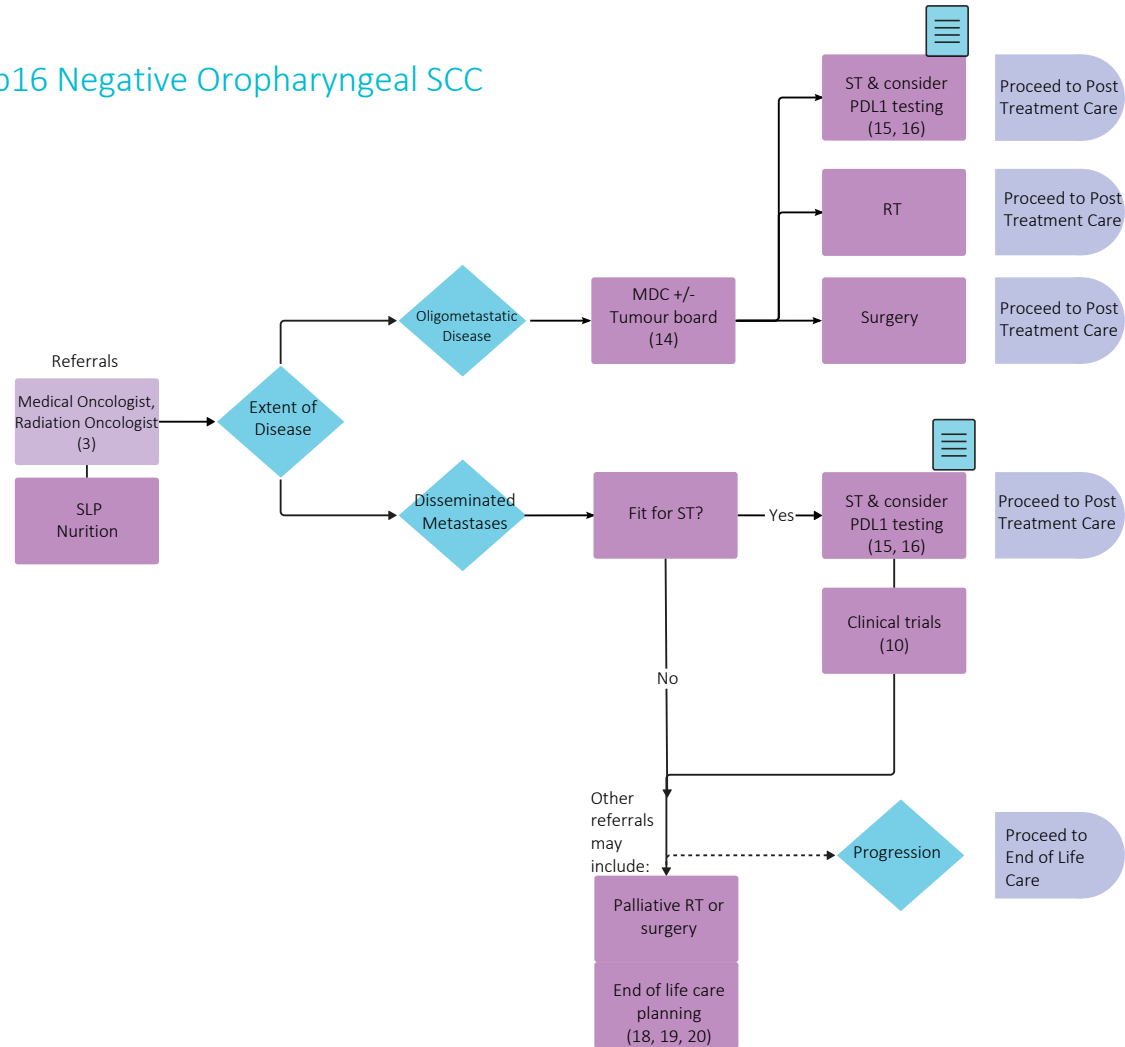
Nursing	Social Work
Physiotherapy	Audiology
PSMPC & PFC (5, 6)	Smoking Cessation Program (2)
MDC +/- Tumour board (14)	Consider need for enteral feeding

Throughout treatment, consider...

Regular symptom & performance status assessment (4); Supportive care (5, 6); Sexual health (7, 8, 9); Co-morbidity management & medication review; Risk factor mitigation; Clinical trials (where applicable) (10); Goals of care (11); Cultural needs (12); Involvement of PCP

## Treatment

### Distant Metastatic p16 Positive and p16 Negative Oropharyngeal SCC



Other referrals may include:

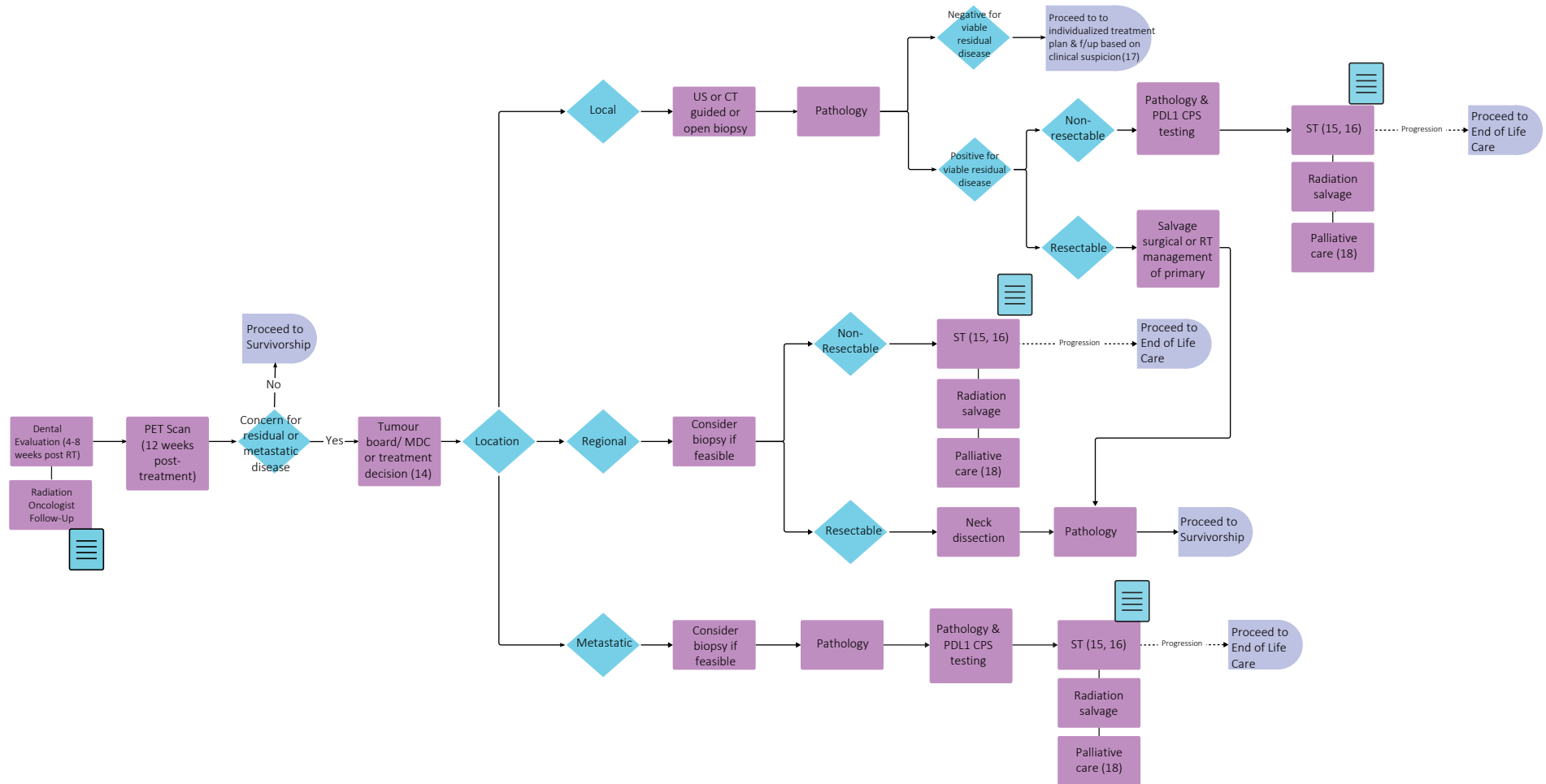
Nursing	Social Work
Physiotherapy	Audiology
PSMPC & PFC (5, 6)	Smoking Cessation Program (2)
MDC +/- Tumour board (14)	Surgical Oncology
Home Care	Dental Oncology

Throughout treatment, consider...

Regular symptom & performance status assessment (4); Supportive care (5, 6); Sexual health (7, 8, 9); Co-morbidity management & medication review; Risk factor mitigation; Clinical trials (where applicable) (10); Goals of care (11); Cultural needs (12); Involvement of PCP



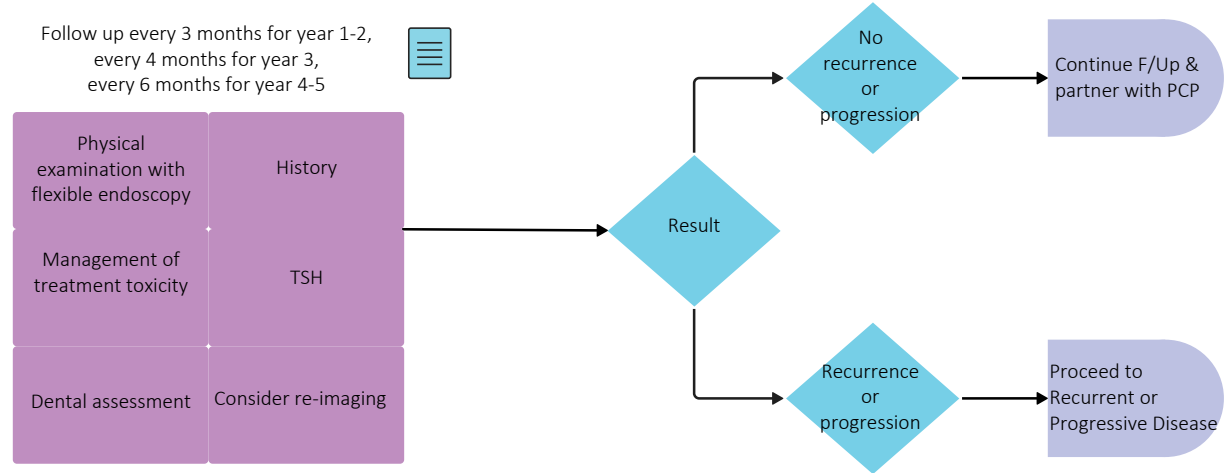
## Post-Treatment Care



Throughout treatment, consider...

Regular symptom & performance status assessment (4); Supportive care (5, 6); Sexual health (7, 8, 9); Co-morbidity management & medication review; Risk factor mitigation; Clinical trials (where applicable) (10); Goals of care (11); Cultural needs (12); Involvement of PCP

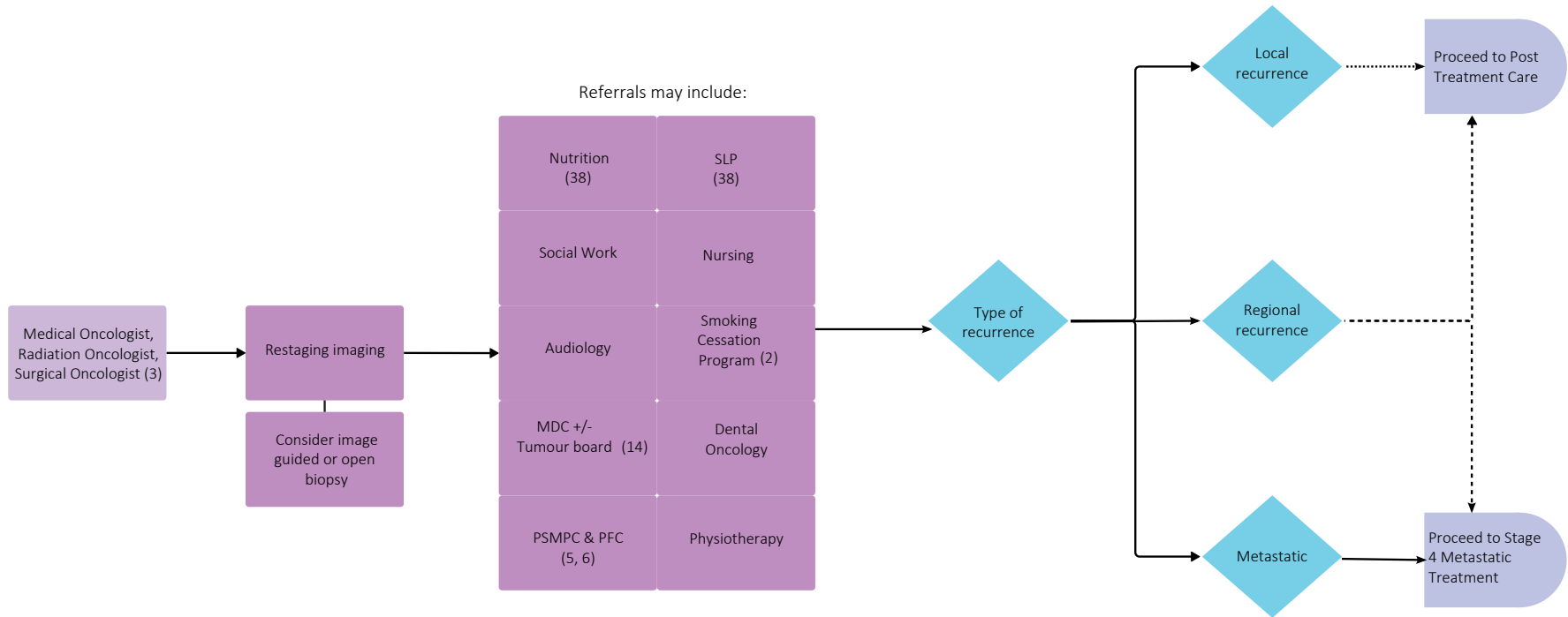
## Survivorship



Throughout treatment, consider...

Regular symptom & performance status assessment (4); Supportive care (5, 6); Sexual health (7, 8, 9); Co-morbidity management & medication review; Risk factor mitigation; Clinical trials (where applicable) (10); Goals of care (11); Cultural needs (12); Involvement of PCP

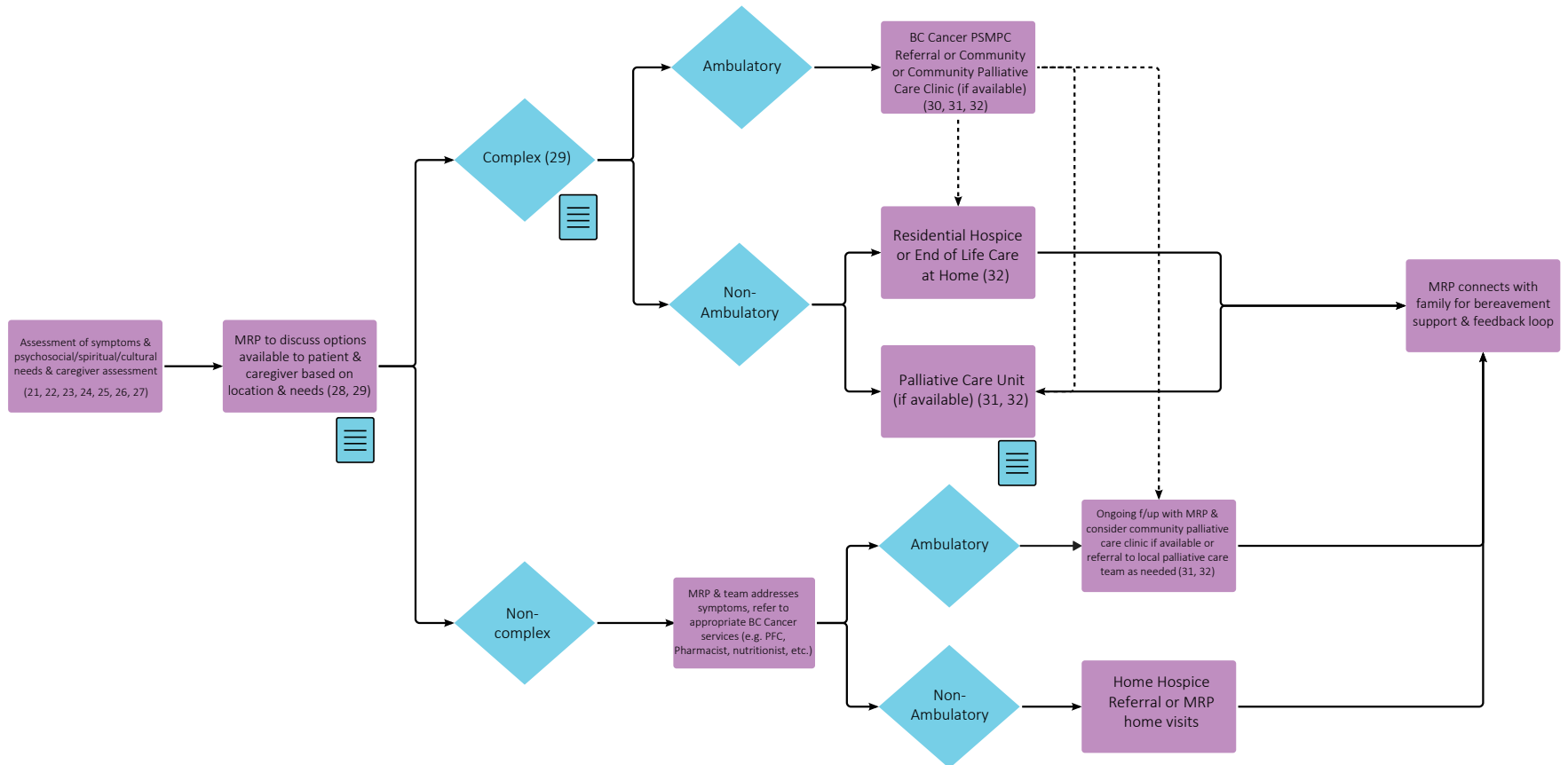
## Recurrent or Progressive Disease



Throughout treatment, consider...

Regular symptom & performance status assessment (4); Supportive care (5, 6); Sexual health (7, 8, 9); Co-morbidity management & medication review; Risk factor mitigation; Clinical trials (where applicable) (10); Goals of care (11); Cultural needs (12); Involvement of PCP

## End of Life Care



Throughout treatment, consider...

Goals of Care Discussion & Consideration of Cultural Needs (17, 6, 19, 20, 28, 29, 36, 42)

# Head & Neck Tumour Group - Oropharyngeal Pathway

---

## Subject Matter Expert Working Group & COIs

**Nicole Chau, Project Lead, Medical Oncologist**  
COI pending

**Sarah Hamilton, Project Lead, Radiation Oncologist**  
No disclosures

**Donald Anderson, Surgical Oncologist**  
COI pending

**Oleksandr Butskiy, Surgical Oncologist**  
No disclosures

**Hilary Cochrane, Speech Language Pathologist**  
COI pending

**Lawren Fischer, Dietitian**  
COI pending

**Cheryl Ho, Medical Oncologist**  
Abbvie, Amgen, AstraZeneca, Bayer, BMS, Eisai, Jazz, Janssen,  
Merck, Novartis, Pfizer, Roche, Sanofi, Sterimax

**Minette Lagman, Nurse Practitioner**  
COI pending

**David MacDonald, Radiologist**  
COI pending

**Monty Martin, Radiologist**  
COI pending

**Nahal Namdaran, Speech Language Pathologist**  
COI pending

**Tony Ng, Pathologist**  
Bayer, Roche

**Harman Parhar, Surgeon**  
No disclosures

**Eitan Prisman, Surgical Oncologist**  
COI pending

**Eric Tran, Radiation Oncologist**  
COI pending

---

## Pathway Program Team

**Tammy Currie, Executive Director, Provincial Programs**

**Amilya Ladak, Policy Analyst, Tumour Groups**

**Shaifa Nanji, Manager, Tumour Groups**

**Sonia Panesar, Project Coordinator, Tumour Groups**

**Christine Simmons, Tumour Group Council Chair**

**Elaine Wai, Senior Executive Director, Medical Affairs and Quality**

**Sarah Weller, Director, Provincial Programs**

## Other Stakeholders

Family Practice & GPO

Indigenous Cancer Control

Nursing Community of Practice (NCoP)

Patient and Family Experience team

Provincial Pharmacy

Radiation Therapists

Surgical Oncology Network

## Appendix

- 1 <http://www.bccancer.bc.ca/health-professionals/professional-resources/clinical-care-pathways>
- 2 <http://www.bccancer.bc.ca/health-professionals/clinical-resources/smoking-cessation-program>
- 3 <http://www.bccancer.bc.ca/health-professionals-site/Documents/Patient-Referral-Form.pdf>
- 4 <https://www.uptodate.com/contents/image?imageKey=HEME%2F72901>
- 5 <http://www.bccancer.bc.ca/our-services/services/supportive-care>
- 6 <http://www.bccancer.bc.ca/our-services/services/support-programs>
- 7 <https://www.olivefertility.com/referring-physicians>
- 8 <https://www.pacificfertility.ca/physician-resources>
- 9 <http://www.bccancer.bc.ca/health-info/coping-with-cancer/managing-symptoms-side-effects/sexual-health>
- 10 <https://www.bccrc.ca/dept/cid/clinical-trials>
- 11 <http://www.bccancer.bc.ca/new-patients-site/Documents/ACP-goals-of-care-orders.pdf>
- 12 <http://www.phsa.ca/aboriginal-health-site/Documents/IPN%20Fillable%20Referral%20Form.pdf>
- 13 <https://pubmed.ncbi.nlm.nih.gov/28094848/>
- 14 <http://www.bccancer.bc.ca/books/Documents/Clinical%20Care%20Pathways/Patient%20Conference%20Order.pdf>
- 15 <http://www.bccancer.bc.ca/health-professionals/clinical-resources/chemotherapy-protocols/head-neck>
- 16 <http://www.bccancer.bc.ca/systemic-therapy-site/Documents/Policy%20and%20Forms/Patient%20assistance%20programs.pdf>
- 17 <https://www.nccn.org/patients/guidelines/content/PDF/hn-oropharyngeal-patient.pdf>
- 18 <http://www.bccancer.bc.ca/our-services/services/supportive-care/pain-symptom-management>
- 19 <http://www.bccancer.bc.ca/new-patients-site/Documents/ACP-tips-for-oncology-professionals.pdf>
- 20 <http://www.bccancer.bc.ca/managing-symptoms-site/Documents/When-Life-Nearing-its-End.pdf>
- 21 <http://www.bccancer.bc.ca/books/Documents/Clinical%20Care%20Pathways/Revised%20PSMPC%20Questionnaire%20Pink%20Form%202020-21.pdf>
- 22 <http://www.bccancer.bc.ca/our-services/centres-clinics/bc-cancer-vancouver/epicc>
- 23 [https://www2.gov.bc.ca/assets/gov/health/practitioner-pro/bc-guidelines/palliative1\\_appendix\\_a.pdf](https://www2.gov.bc.ca/assets/gov/health/practitioner-pro/bc-guidelines/palliative1_appendix_a.pdf)
- 24 <https://bc-cpc.ca/wp-content/uploads/2018/09/SMGs-interactive-final-Nov-30-compressed.pdf>
- 25 <https://www2.gov.bc.ca/gov/content/health/practitioner-professional-resources/bc-guidelines/palliative-care>
- 26 <https://www2.gov.bc.ca/gov/content/health/practitioner-professional-resources/pharmacare/prescribers/plan-p-bc-palliative-care-benefits-program>
- 27 <http://www.bccancer.bc.ca/our-services/services/indigenous-cancer-control>
- 28 <http://www.bccancer.bc.ca/new-patients-site/Documents/SeriousIllnessConversationGuideCard.pdf>
- 29 <http://www.phsa.ca/health-info/medical-assistance-in-dying>
- 30 <http://www.bccancer.bc.ca/managing-symptoms-site/Documents/PSMPC-Referral-Form-for-All-BC-Cancer-Centres.pdf>
- 31 <http://www.bccancer.bc.ca/our-services/services/supportive-care/pain-symptom-management#What--we--do>
- 32 [https://vancouver.pathwaysbc.ca/service\\_categories/24](https://vancouver.pathwaysbc.ca/service_categories/24)
- 33 <http://www.bccancer.bc.ca/new-patients-site/Documents/Goals%20of%20Care%20Orders%20Form%20June%202018%20Final.pdf>
- 34 <https://cap.phsa.ca/>

## Appendix

35 <http://www.bccancer.bc.ca/prevent/alcohol/reduce-your-risk>

36 <https://www2.gov.bc.ca/assets/gov/people/seniors/health-safety/pdf/myvoice-advancecareplanningguide.pdf>

37 <https://www2.gov.bc.ca/gov/content/family-social-supports/seniors/health-safety/advance-care-planning>

38 <http://www.bccancer.bc.ca/coping-and-support-site/Documents/Support%20Programs/Supportive-Care-External-Referral-Form.pdf>

39 <http://www.bccancer.bc.ca/health-professionals/clinical-resources/pharmacy#Contact--info>